

Manuherikia TB Management Area

2025/26

Possum Control Factsheet



What's happening?

Possums are a vector of bovine tuberculosis (TB) spreading the disease through direct contact with stock. To eliminate the risk of bovine TB spreading in domestic stock, TBfree NZ has implemented a possum control operation in the area known as the **Manuherikia TB Management Area (TMA)**

Where is it happening?

The Manuherikia TMA encompasses a total area of 199,430 hectares, divided into two distinct blocks. The first block, covering 156,609 hectares, lies between the Dunstan Mountain Range and State Highway 85, extending from Chatto Creek to Idaburn, with its southeastern boundary defined by the Hawkdun Range. The second block spans 42,821 hectares and is bounded by natural landmarks: Poolburn and Moa Creek form the western edge, Rough Ridge marks the eastern boundary, the area extends south to above the Manorburn Reservoir and reaches north to the Poolburn settlement.

See map overleaf

When will this happen?

The operation initially started on 17 March 2025 and continued through to 30 June 2026. Work in the second block is scheduled to commence on 20 October 2025. Downer personnel will keep in close contact with landholders regarding exact timeframes and methods on individual properties.

Who will do the survey?

Downer has been contracted by TBfree New Zealand to undertake the work.

Who is Downer Biosecurity?

Downer has experienced staff and depot facilities located from Kaikoura in the north to Cromwell in the south. All staff are trained professionals with high levels of skill and experience in all aspects of vertebrate pest control and survey work.

What control methods are being used?

Due to the varied land use in the area a variety of methods are proposed. The methods used on each property will be discussed and agreed with the landholder prior to work commencing.

WARNING: POISONS ARE TOXIC TO PEOPLE AND ANIMALS - DO NOT TOUCH

Potassium cyanide (POISON)

Feratox (in bait bags)

Feratox is a small capsule containing cyanide poison (about the size of a small pea). In bait bags the cyanide capsule has been placed into a green non-toxic peanut paste inside a small blue biodegradable bag. The blue bags are attached to trees and fence posts in possum habitat approximately 50 cm off the ground. In areas where stock are present, bait will be placed above stock height.

Feratox (in bait stations)

Feratox is a small capsule containing cyanide poison (about the size of a small pea). Feratox will be contained within Romark, and/or KK stations)



bait stations (see bait station types below). In areas where stock are present, stations will be placed above stock height.



Cyanara 50 (hand-laid)

Cyanara 50 paste (green) will be hand laid or placed within Romark, and/or KK bait stations (see bait station types below).

Lure will be laid alongside the green paste bait. In areas where stock are present, stations will be placed above stock height.

What bait stations are being used?

Romark



Indac



KK



What trapping methods are being used?

Leghold traps and kill traps: These are set in areas away from domestic animals in habitat where possums frequent. Leghold traps are checked daily.

Cage traps: Any non-target animals caught in a cage trap can be released without injury. Cage traps are checked on a daily basis and are ideal for use near dwellings.

Dog and gun: Dog and gun may be used on this operation in conjunction with other control methods, and in areas where traps or toxins may not be suitable. The dogs are very efficient at locating possums, which are then dealt with by the handler (using a firearm). Firearms will not be used within 500m of any dwellings.

When using poisons (pesticides) there is a poisoning risk to humans and domestic animals. Poisoning can occur by eating poisonous baits, however there is a very low risk of secondary poisoning with Feratox (i.e. dogs eating possum carcasses).

Poison warning signs will be in place and maintained throughout the operation to advise where poisons have been used. The area should be treated with caution until signs are removed.

- Baits are toxic to people and animals.
- Do not touch poison bait.
- Do not touch traps.
- Poison bait or carcasses are deadly to dogs.

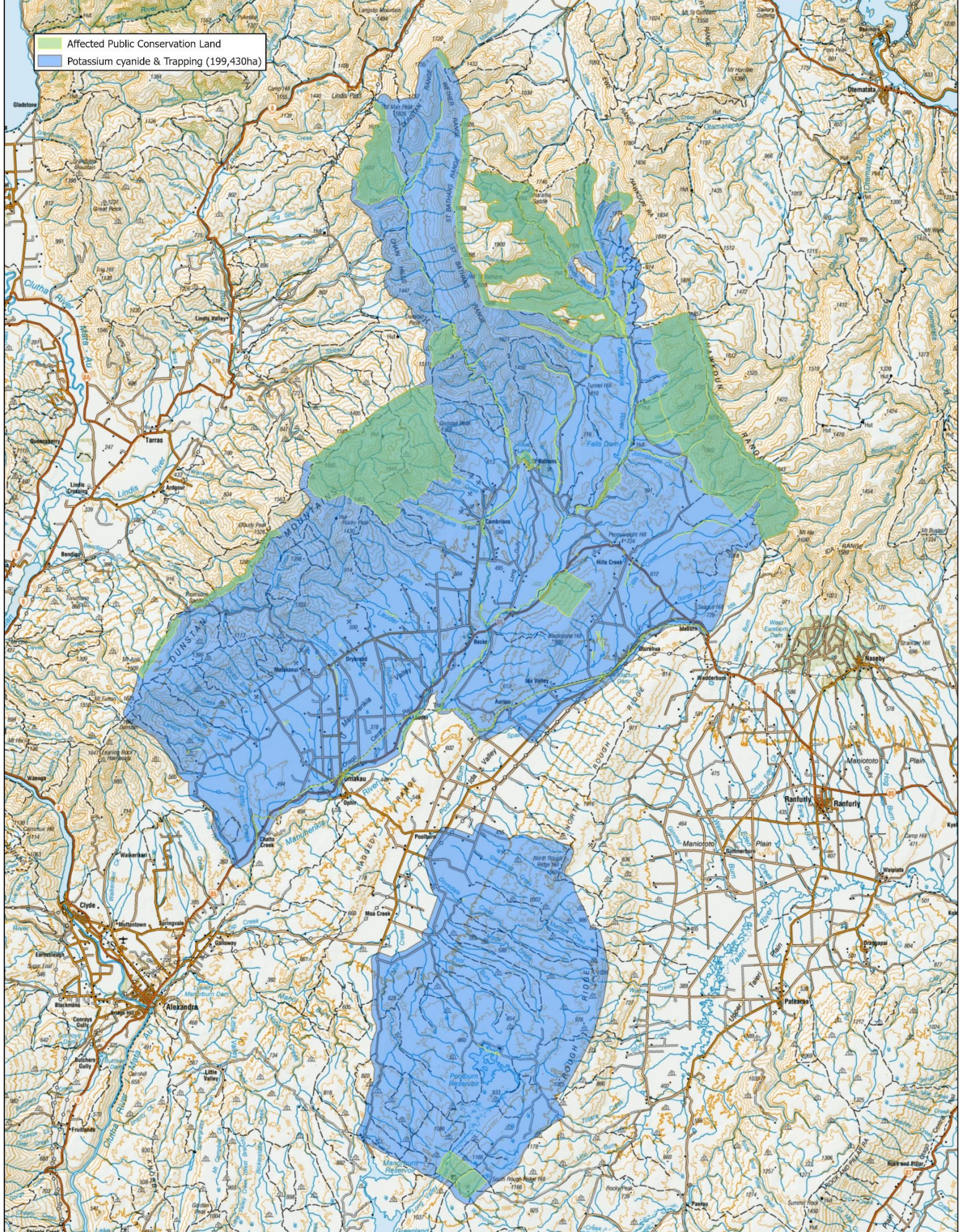
- Watch children at all times.
- Tell any visitors to the area of the danger.
- Follow the advice on the poison warning signs.

In the case of poisoning, always contact your:

- Local Hospital, Medical Centre or dial 111
- National Poisons Centre 0800 764 766

In the case of a domestic animal being poisoned, contact a local veterinarian.

Project Supervisor
Southern South Island
0508 392 355
Biosecurity@downer.co.nz



Affected Public Conservation Land
 Potassium cyanide & Trapping (199,430ha)

Manuherikia TMA



Activity: Ground Control Input
 Customer: TBfree NZ Ltd
 Contractor: Downer NZ Ltd
 Subcontractor: Summit Contracting Ltd

0 5 10 20 Kilometers

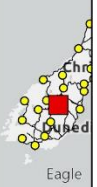
Map Series: Topo250

Map Prepared: 25/09/2025 1:15 pm

Coordinate System: NZGD 2000 New Zealand Transverse Mercator



Topographic Map and Cadastral Information derived from LINZ Crown copyright reserved.
 Information Shown is the currently assumed knowledge as at date printed.
 If information is vital, confirm with the authoritative owner.



Eagle

